

# Spykit 550

For sectional doors up to 9 m<sup>2</sup> and up-and-over doors (including canopy doors) up to 10.5 m<sup>2</sup>

24 Vdc irreversible electromechanical gear motor for residential use, transmission with rack on the rail.

To be combined with SPYRAIL321, SPYRAIL162 and SPYRAIL081 rails.

**Functional and stylish:** the motor is the only component that moves on the rail, there are no chains or other noisy mechanisms. Ideal for any architectural context.

**Handy:** Separate control unit: more practical and convenient for programming and maintenance. Built-in LED courtesy light. Three practical keys to control the automation.

**Quick to install:** modular rail with assembly accessories. Limit switches easy to position along the rail with no need to stand and work on the ceiling. No chains or other noisy mechanisms to install.

**Easy to program:** simple and fast basic programming, using the Quick Setup procedure. Simplified advanced programming, using O-View.

**ON/OFF release system:** pulling the release knob once releases the motor; pulling it a second time blocks the motor again, in any position along the rail.

**Inexpensive to run and environmentally-friendly:** when connected to the mains in standby mode, the control unit consumes 1.5 W.

**Safe:** obstacle detection, motor power monitoring during travel, diagnostic messages via flashing light and courtesy light.

Adjustable acceleration and deceleration at the start and end of each manoeuvre.

Ready for installation of the latest generation 8.2 kOhm resistive sensitive edges.

**Optimised logistics:** for practical management and transport, the rails are available in different sizes: single 3.2 m long rail, or supplied in two 1.6 m sections plus a 0.8 m extension.



## The kit contains:

### SPY550

1 gearmotor, 550 N.



### SPYBOX

1 Control unit with built-in LED courtesy light and receiver.



### FLO2RE

1 Transmitter 433.92 MHz, 2 channels.



## COMMON ACCESSORIES



### IBT4N

Interface for connecting the O-View programming unit.

Pc./Pack 1



### IT4WIFI

Smart Wi-fi interface to manage gates and garage doors by smart-phone.

Pc./Pack 1



### SPA5

Oscillating arm sliding on bearings with optimised structure for projecting up-and-over doors.

Pc./Pack 1



### SPA6

Large 585 mm long connecting arm.

Pc./Pack 1



### KI1

Outside release kit with metal pull-cord and lock and key.

Pc./Pack 1



### SPA2

Kit for unlocking from the outside with cable.

Pc./Pack 1



### TS

Signboard.

Pc./Pack 1

## TECHNICAL SPECIFICATIONS

Code	Description	Pack/ Pallet
<b>SPY550KCE</b>	Kit for the automation of sectional and up-and-over doors, 550 N, with SPYBOX control unit and 1 FLO2RE transmitter. Rails not included	48

Code	SPY550KCE
<b>ELECTRICAL DATA</b>	
Power supply (Vac 50/60 Hz)	230 ± 10%
Absorption (A)	1,2
Maximum power (W)	200
Power in standby (W)	1,5
<b>PERFORMANCE DATA</b>	
Maximum speed (m/s)	0,15
Maximum force (N)	550
Nominal force (N)	180
Work cycle (cycles/hour)	20
Working cycle (cycles/day)	200
<b>DIMENSIONAL AND GENERAL DATA</b>	
Protection level (IP)	IP40
Working temp. (°C Min/Max)	-20 ÷ +55
Pack dimensions (mm)	380x380x125 h
Weight (kg)	3,2

## RAIL TECHNICAL SPECIFICATIONS

Code	Description	Pack/ Pallet
<b>SPYRAIL321</b>	1 x 3.2 m rail with assembly accessories	48
<b>SPYRAIL162</b>	2 x 1.6 m rails with assembly accessories	48
<b>SPYRAIL081</b>	0.8 m extension with assembly accessories (to add to the other rails so as to reach a length of 4 m)	48

Code	SPYRAIL321	SPYRAIL162	SPYRAIL081*
Type	3.2 m (one section)	3.2 m (2 pcs length 1.6 m)	0.8 m (rails to reach length 4 m)
Installed rail length (mm)	3270		4075
Useful travel (mm)	2710		3515
Weight (kg)	7,5	8,35	3,3
Pack dimensions (mm)	3230x110x50	1760x110x50	960x110x50
Accessories pack dimensions (mm)	400x400x90		

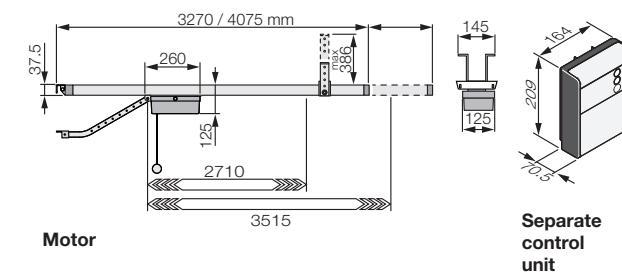
\* To be used in combination with SPYRAIL321 e SPYRAIL162 rails

## UTILISATION LIMITS

Using the maximum travel

	Non-projecting up-and-over door (with SPA5)		Projecting up-and-over door (with SPA5) or with springs (without SPA5)		Sectional	
	H	L	H	L	H	L
SPY550 with 3.2 m rail	2,3 m	3,5 m	2,8 m	3,5 m	2,5 m	3,6 m
SPY550 with 4 m rail	3,1 m	2,6 m	3,5 m	2,9 m	3,3 m	2,8 m

## DIMENSIONS



## COMPATIBILITY TABLE WITH CONTROL SYSTEMS AND ACCESSORIES

Code	receiver				transmitter						photocells										flashing light		
	Built-in*	OXI	OXIBD	OXILR	ERA INTI	ERA ONE**	ERA ONE BD**	ERA ONE LR**	ERA FLOR	NICEWAY	EPS	EPH	EPL	EPSB	EPMB	EPLB	EPNOR	F210	F210B	F210B	ELAC	ELDC	WLT
SPYBOX	•	•	•	•	•	•	•	•	•	•	•	•	•	•	•	•	•	•	•	•	•	•	•
SPYBOXB	•	•	•	•	•	•	•	•	•	•	•	•	•	•	•	•	•	•	•	•	•	•	•

\* Radio receiver incompatible with Opera system

\*\* ERA ONE remote controls, when used with SPYBOX, work as ERA FLOR models

For swing gates

For sliding gates

Barrier gate operator systems

For garage and industrial doors

Control systems and accessories

Compatibility table and alphabetical index