

# CoreStation

Intelligent Biometric Controller



Suprema CoreStation is an intelligent door controller which provides the advantages of a biometric-enabled security over a centralized access control systems. Designed for mid to enterprise-level systems, the CoreStation handles up to 500,000 users with an incredible fingerprint matching speed of upto 400,000 match/sec. With the provisions of high-performance, biometric readiness, Ethernet communication, CoreStation is capable of offering the full features of the BioStar 2 platform. The device provides centralized biometric template management and also interfaces with complete set of reader technologies including RS-485(OSDP) and Wiegand. With its versatility, CoreStation is a perfect access control solution for both new installations as well as a replacement of existing systems.

**suprema**  
SECURITY & BIOMETRICS

## Features



### Centralized Biometric Access Control

- Centralized storage of biometric and access group data
- Complete controller functionalities with fingerprint matching
- Multi-port interface for fingerprint/RF readers
  - Supports locks, sensors, RTE, and alarm devices



### Enterprise-level Capacity

- Max 500,000 users (1 million fingerprint templates)
  - 500,000 RF cards / 5,000,000 event logs
- High-speed fingerprint matching
  - Max 400,000 match/sec (genuine matching)
- UL 294 Compliant:
  - Highest safety and reliability certified by world-renowned label



### Improved Security

- No Ethernet connection to the door reader
- No data storage at the door reader
- Secured communication between server and CoreStation (TLS 1.2)



### System Flexibility and Scalability

- Controls up to 132 access points with extension modules (DM-20)
- Elevator Control (OM-120)
- Supports OSDP (Open Supervised Device Protocol)



### Fully Compatible with BioStar 2

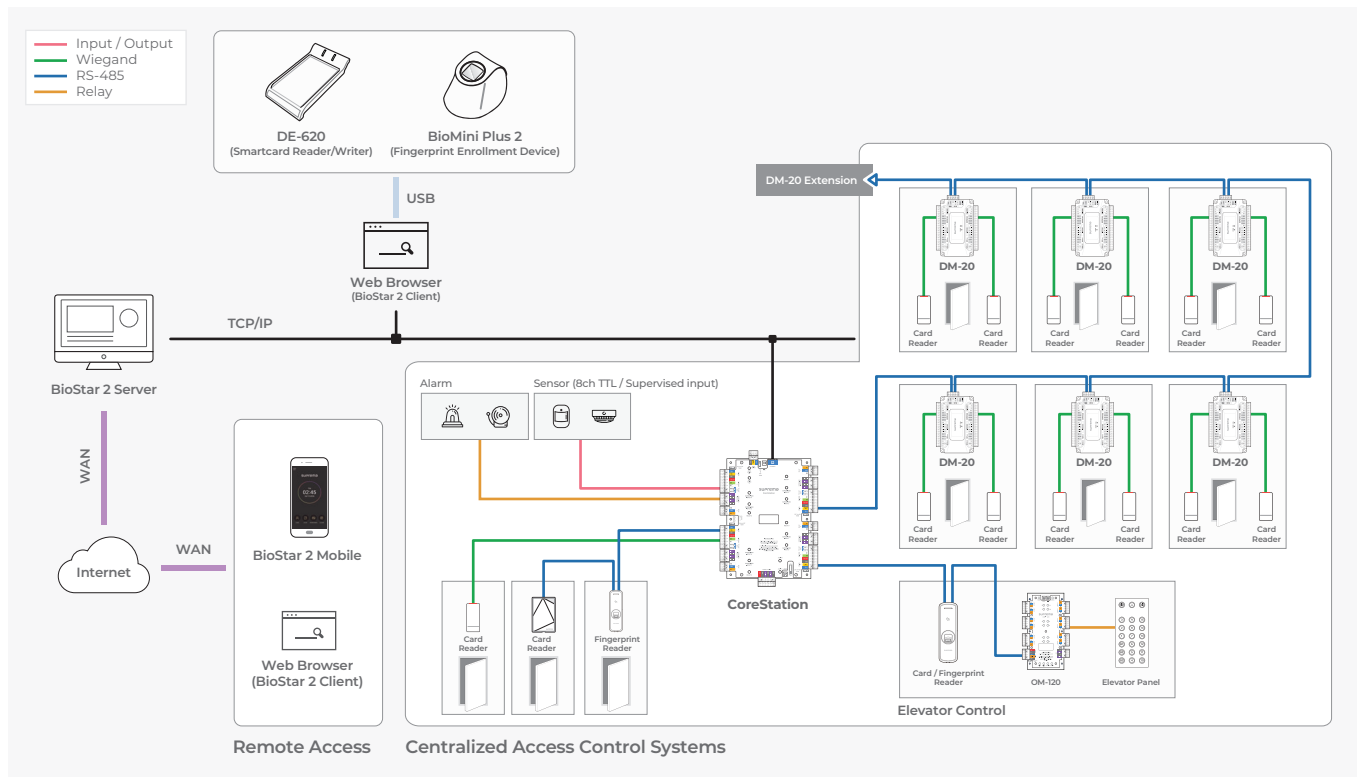
- Easy operation and configuration
- Comprehensive access control and time & attendance functionalities

## Specifications

|                       |  |
|-----------------------|--|
| Model Name            | CS40                                   |
| CPU                   | 1.4 GHz Octa Core                      |
| Memory                | 8GB Flash + 1GB RAM                    |
| Max. User             | 500,000 (1:1), 100,000 (1:N)           |
| Max. Template         | 1,000,000 (1:1), 200,000 (1:N)*        |
| Max. Logs             | 5,000,000 (text)                       |
| Serial Comm. Protocol | OSDP V2                                |
| Ethernet              | 10/100Mbps, auto MDI/MDI-X             |
| RS-485                | 5 ch                                   |
| Wiegand               | 4 ch input                             |
| Relay                 | 4 relays                               |
| TTL Input             | 8 ch (Supervised input selectable)     |
| TTL Output            | 8 ch                                   |
| AUX Input             | 2 ch (AC Power Fail, Tamper)           |
| Operating Temperature | 0°C~50°C                               |
| Dimensions (WxHxD)    | 150 x 214 x 21 mm                      |
| Power                 | DC 12V                                 |
| Power Output (Reader) | 4 ch (DC 12V)                          |
| Certification         | CE, FCC, KC, RoHS, WEEE, REACH, UL 294 |

\* Two templates per finger

## System Configurations



## Suprema Inc.

17F Parkview Tower, 248, Jeongjail-ro, Bundang-gu, Seongnam-si, Gyeonggi-do, 13554, Republic of Korea  
T +82 31 783 4502 E sales\_sys@supremainc.com www.supremainc.com



For more information about Suprema's global branch offices, visit the webpage below by scanning the QR code.  
<https://www.supremainc.com/en/about/contact-us.asp>