

viRalert 2

HUMAN BODY TEMPERATURE
MEASUREMENT SYSTEM



vIRalert 2

HUMAN BODY TEMPERATURE MEASUREMENT SYSTEM

AMETEK LAND HAS BEEN MANUFACTURING PRECISION MEASURING EQUIPMENT SINCE 1947.

We are specialists in non-contact temperature measurement and combustion monitoring with applications across diverse industries such as steel and glass making, power generation and cement manufacture.

As part of AMETEK Process & Analytical Instruments Division since 2006, our customers benefit from the worldwide AMETEK sales and service team.

In a world where global travel means infections can pass through populations fast, the ability to screen people for fever is a key tool in reducing the risk of disease spread.

The vIRalert 2 fixed thermal imaging system provides accurate and remote surface measurement of the human body (typically the face) automatically alerting the operator to potential risks.

Most economical thermal imagers cannot achieve the necessary accuracy of measurement to detect the small changes induced by a fever but by comparing the thermal image with an extremely precise blackbody calibration source in real-time, the vIRalert 2 system can provide accurate and reliable skin temperature

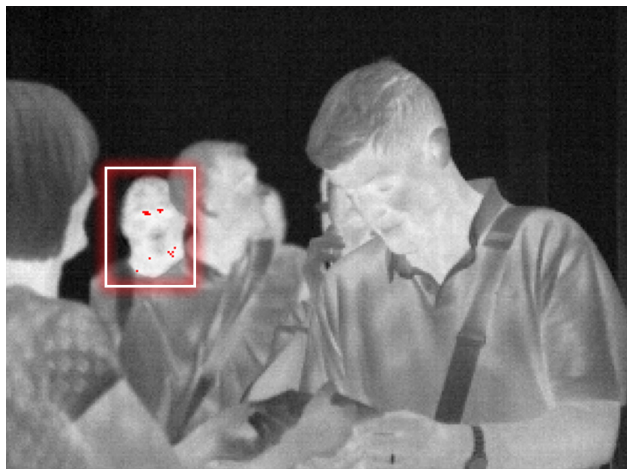
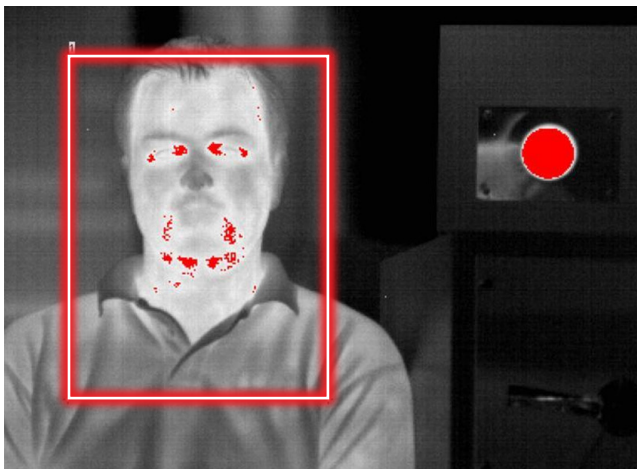
measurement for mass screening of high pedestrian areas like airports, train stations, key operational facilities and factories and other places where infectious diseases can easily spread.

The system provides on-screen and audible alerts when a pedestrian with an elevated temperature is detected allowing simple decision making on whether a person should be further vetted for admission without slowing pedestrian flow.

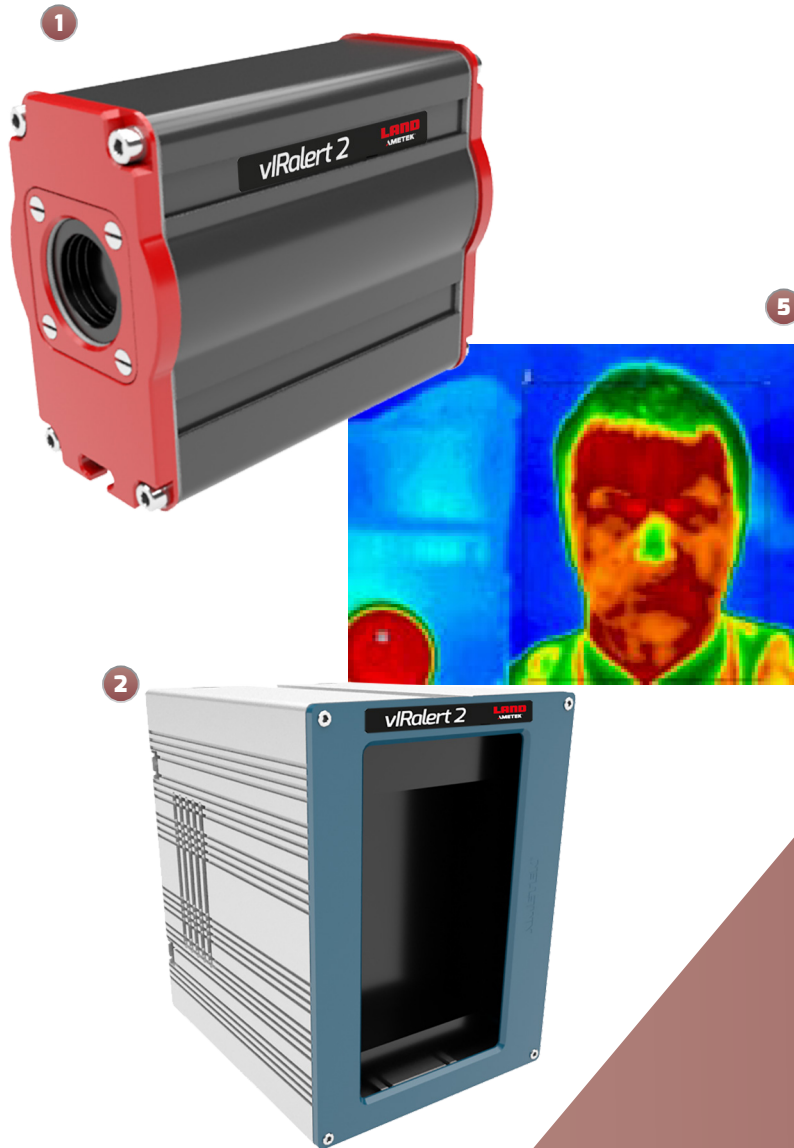
With a typical detection distance of 2 metres, the system gives a field of view of 140 x 110cm from the thermal imager.

The vIRalert 2 is AMETEK Land's accurate thermal imaging system for human body temperature measurement.

THERMAL MONITORING ▼



SPECIFICATION & DESIGN



1: THERMAL IMAGING SYSTEM

Measuring 0 to 50°C / 32 to 122°F, 39x31° angle provides thermal view and 80 x 64 resolution gives 5,210 temperature data points.

2: CERTIFIED BLACKBODY HEAT SOURCE

Calibrated to 38°C for extremely precise comparisons. Includes power supply.

3: CONNECTING CABLES AND TRIPOD

Ethernet and Power between IMAGER and laptop (5m / 15ft).

4: FLEXIBLE MOUNTINGS

Tripod for both System and source for quick and easy positioning with options for simple wall and ceiling mount.

5: SCREENING SOFTWARE

Continuous or still image showing normal temperature in black and white with abnormally high temperatures in red. On screen and audio alarm triggered if potential fever detected. Supply of laptop for running software is optional.

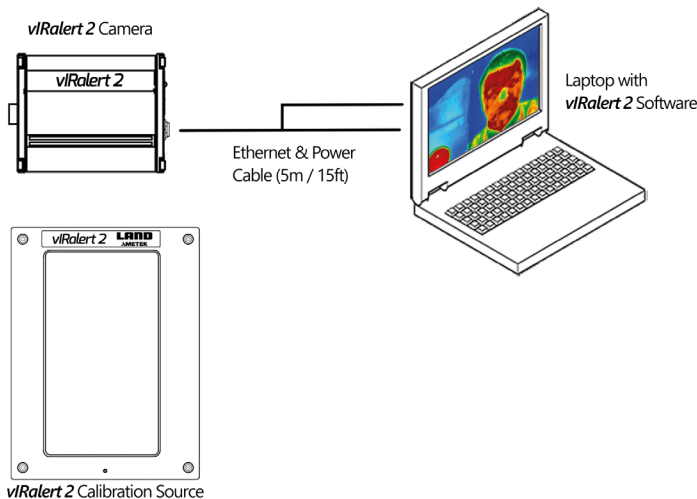
KEY APPLICATIONS

Transport and Travel - Airports, Railway Stations, Subways, Underground Rail Systems, Large Public Buildings

Education - Schools, Colleges, Universities, Municipal Libraries

Business - Office Complexes, Council Offices

SYSTEM OVERVIEW



KEY BENEFITS

Instant non-intrusive measurement using infrared thermal imaging technology with market-lead temperature measurement accuracy.

Monitors for high temperature without slowing down the flow of people.

Fixed remote measurement minimises the risk of infection transmission to operators.

Complete On-line System Solution works out of the box and is simple to operate.

Quick and easy to install and re-locate as required with simple tripod mountings.

Automatic alert function reduces potential for human error and immediately alerts the operator if trigger point reached.

SPECIFICATIONS

IMAGER SYSTEM

Temperature Measurement Range:	0 to 50°C / 32 to 122°F
Detector Array Format:	80 x 64 pixels
Detector:	Uncooled Thermopile Array
Spectral Response:	8 to 14µm
Frame Frequency:	20Hz
Temperature Resolution:	<0.12°C
Field of View:	39 x 31°
Power Supply Requirement:	5VDC (USB) from computer
Interfaces:	Wired Ethernet
Image Processing Software:	Continuous or still image display showing normal temperature in black and white with abnormally high temperatures in red. On screen and audio alarm triggered if potential fever detected.
Operating Temperature Range:	0 to 60°C / 32 to 140°F

BLACKBODY HEAT SOURCE

Temperature:	38°C / 100.4°F
Emissivity:	0.97
Target Size:	80mm dia (minimum)
Combined Accuracy / Stability:	+/-0.2°C (+/-0.3°F)
Power Supply Requirement:	100-240VAC, 2A (Supplied with 24VDC power adaptor)
Operating Temperature Range:	0 to 60°C / 32 to 140°F



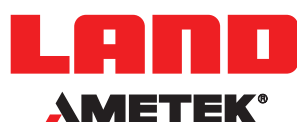
AMETEK Land's AMECare Performance Services ensure peak performance and maximum return on investment over the life of your equipment.

We will deliver this by:

- Proactively maintaining your equipment to maximize availability.
- Optimizing solutions to meet your unique applications.
- Enhancing user skills by providing access to product and application experts.

AMETEK Land's global service network provides unparalleled after-sales services to ensure you get the best performance and value from your AMETEK Land products. Our dedicated service centre teams and on-site engineers are trained to deliver the highest standard of commissioning, maintenance and after-sales support.

**vIRalert 2 IS AMETEK LAND'S
ACCURATE THERMAL IMAGING SYSTEM
FOR HUMAN BODY TEMPERATURE
MEASUREMENT.
WWW.AMETEK-LAND.COM**



CONTACT US



www.ametek-land.com



land.enquiry@ametek.com



APPLIES IN INDIA



APPLIES IN THE UK



APPLIES IN THE US



REGISTERED
MANAGEMENT SYSTEM